

No.	ISSUANCE AND REVISION DESCRIPTIONS	DATE	BY

SITE NOTES:

- EXISTING CONDITIONS SHOWN HEREON ARE FROM A SURVEY FILED BY ALLIANCE LAND SURVEYING, DATED 2/20/08/17.
- PARCEL ID 08167 006902

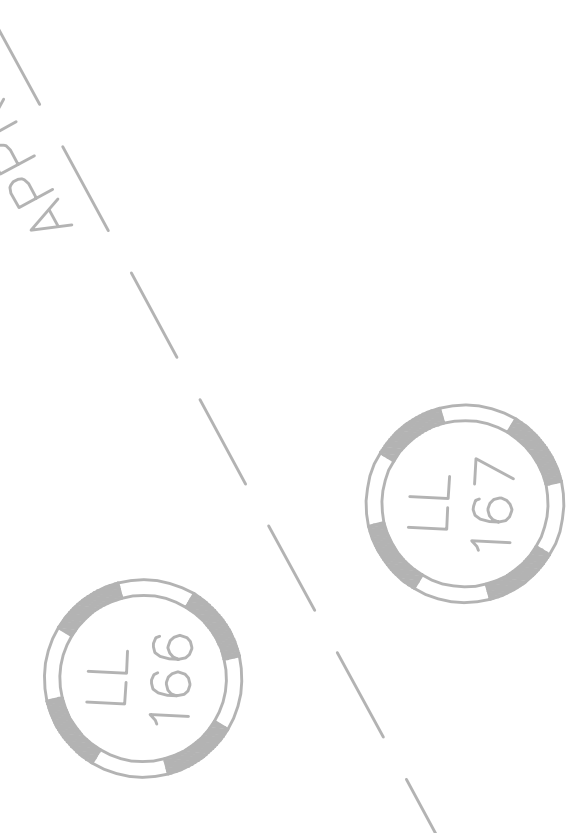
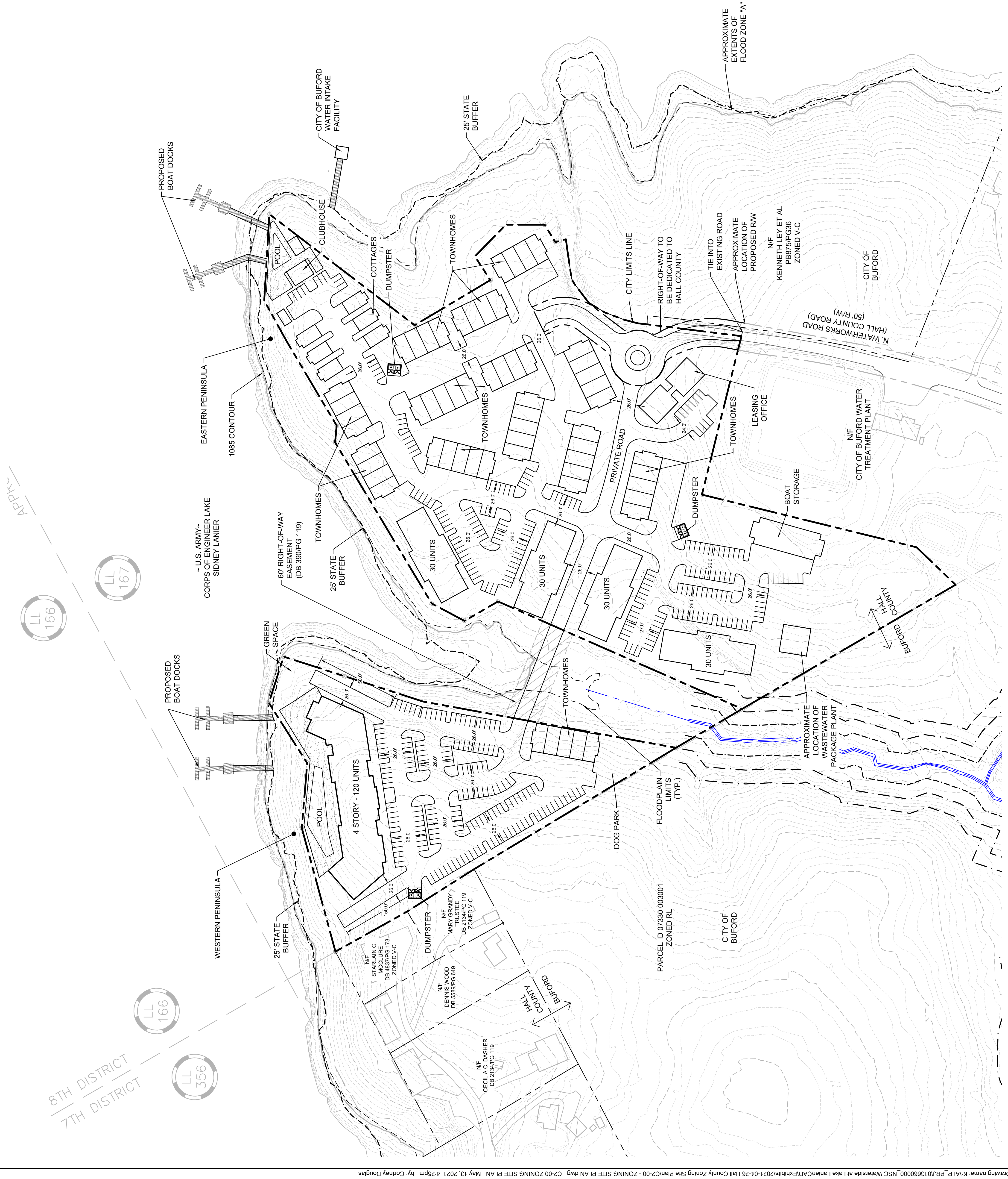
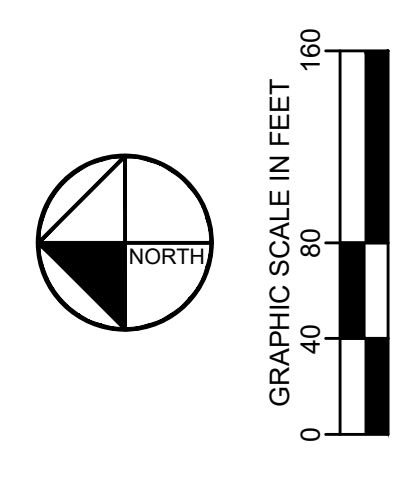
CURRENT ZONING: AGRICULTURAL RESIDENTIAL - AR3
 PROPOSED ZONING: PLANNED RESIDENTIAL DEVELOPMENT - PRD

SITE PLAN LEGEND:

- PROPERTY LINE
- BUFFER LINE
- FLOODPLAIN LINE
- FLOOD ELEVATION LINE

240 UNITS
 59 TOWNHOMES
 6 COTTAGES
 347 PARKING SPACES

MAY 17, 2021



8TH DISTRICT
 7TH DISTRICT