

LOCATED IN:
LAND LOT 167
8TH DISTRICT
HALL COUNTY, GEORGIA

REZONING EXHIBIT
FOR
KIMLEY-HORN
3450 NORTH WATERWORKS ROAD

ISSUE:	DATE	DESC.
INITIAL:	09/29/20	
REV. 1:		
REV. 2:		
REV. 3:		
REV. 4:		
REV. 5:		
REV. 6:		
REV. 7:		

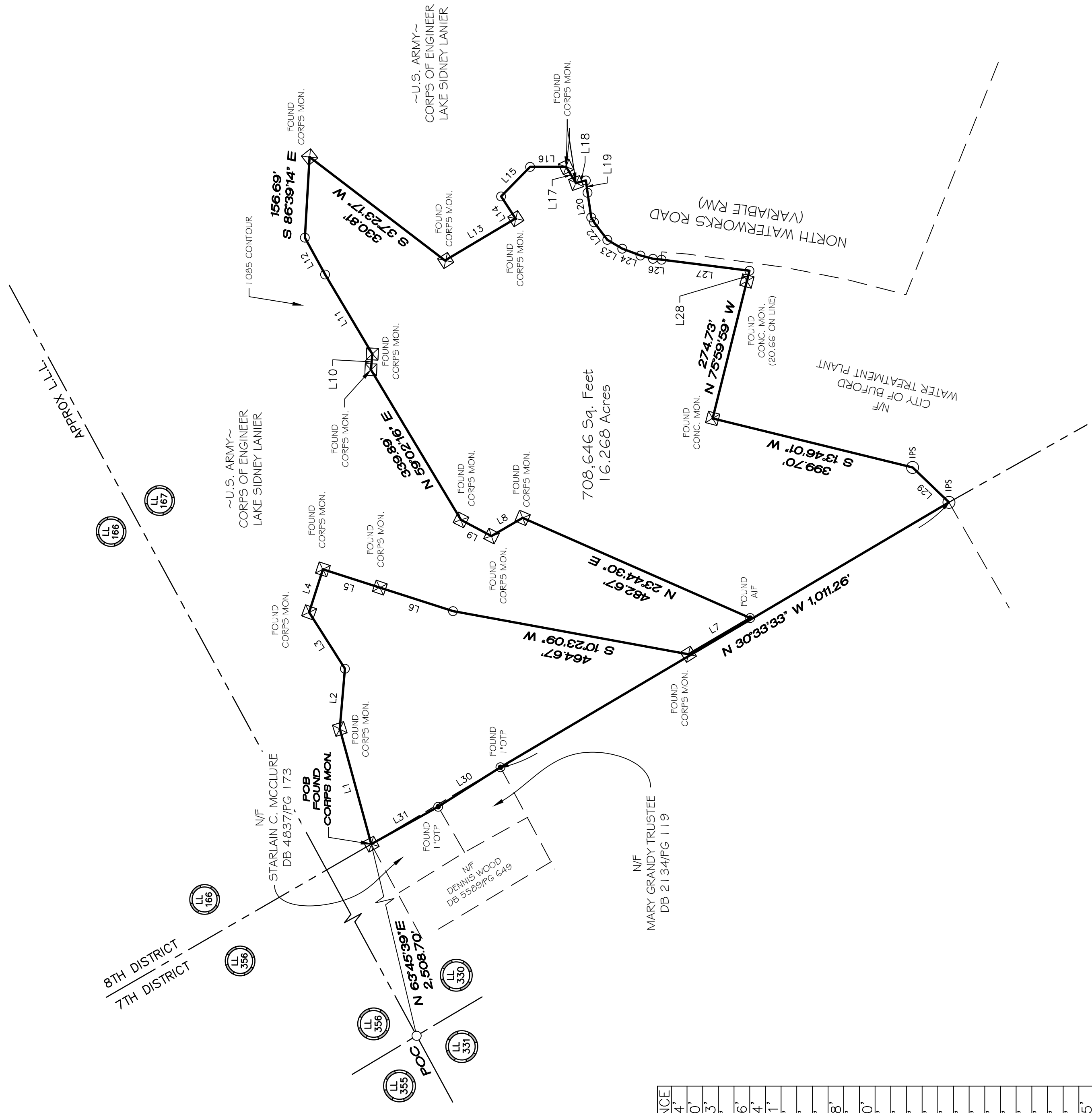
DRAFTED BY: MCB
CHECKED BY: DLA
PROJECT #: 20006

GRID NORTH
GEORGIA WEST STATE PLANE
NAD 83 (2011)



LEGEND

	IRON PIN FOUND
	COMPUTED POINT
	SET 5/8" CAPPED REBAR
	CONCRETE MONUMENT
	LAND LOT
	PROPERTY LINE
	ADJACENT PROPERTY LINE
	ANGLE IRON FOUND
	OPEN TOP PIPE
	MAG NAIL SET



LINE	BEARING	DISTANCE
L1	N 74°45'08" E	232.24'
L2	S 85°05'33" E	116.90'
L3	N 57°33'27" E	129.63'
L4	S 72°11'12" E	87.65'
L5	S 17°48'17" W	116.06'
L6	S 17°48'44" W	149.24'
L7	S 30°24'26" E	139.11'
L8	N 30°13'19" W	70.00'
L9	N 27°51'42" E	67.04'
L10	S 84°46'49" E	30.62'
L11	N 59°17'20" E	179.58'
L12	N 61°13'34" E	81.56'
L13	S 30°44'43" E	159.40'
L14	N 56°54'17" E	51.30'
L15	S 45°30'43" E	80.40'
L16	S 00°05'14" W	69.91'
L17	S 58°26'53" W	36.76'
L18	S 14°45'51" E	19.79'
L19	S 82°15'06" W	24.18'
L20	S 81°29'34" W	48.39'
L21	S 60°25'58" W	10.77'
L22	S 52°42'56" W	42.82'
L23	S 30°38'19" W	33.60'
L24	S 20°35'17" W	37.78'
L25	S 14°38'28" W	25.06'
L26	S 06°11'58" W	16.91'
L27	S 07°09'12" W	171.95'
L28	N 75°59'59" W	20.66'
L29	S 43°50'31" W	97.85'
L30	N 32°20'33" W	143.15'
L31	N 29°12'05" W	148.90'

NOT TO SCALE